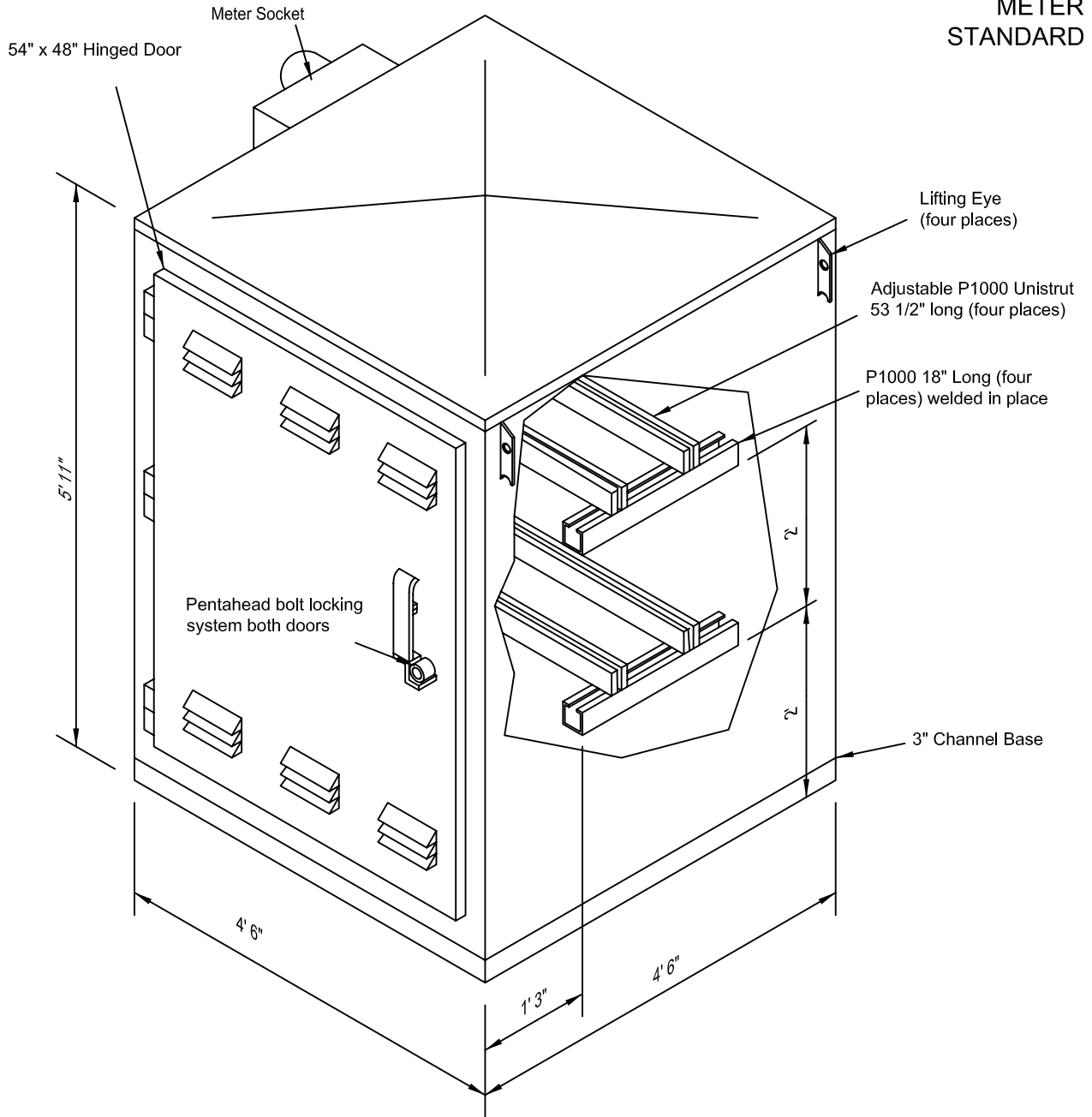


**PNM  
METER  
STANDARD**



**NOTES**

- (1) Meter enclosure, may be mounted on either side of CT and PT enclosure.
- (2) Customer will furnish both meter socket and CT enclosure and deliver to PNM.
- (3) PNM will mount meter enclosure, transformer, meter and meter wiring.
- (4) Enclosure must comply with PNM specification M-1.

**REFERENCES**

- (1) See MS-2-7.0 Three-Phase Thirteen-Terminal Socket for CT Meter
- (2) See MS-3-4.0 Triplex Meter Enclosure
- (3) See MS-3-18.0 7200/12470V Primary Meter Enclosure
- (4) See MS-3-20.0 7200/12470V CT and PT Meter Enclosure Mounts
- (5) See MS-3-21.0 7200/12470V CT and PT Meter Enclosure Pad

**Important:**

Socket shall be wired phase 1-2-3 from left to right and the conductors marked as such. Each conductor phase will be identified at the weather head or padmount, and at the meter base using band-wraps of electrical tape; one band for phase one, two bands for phase two, and three bands for phase three. White tape is suitable for neutral conductors only.

**Approved Equipment**

Manufacturer	Item	Part #
Easter-Owens	Enclosure	#EOT-79
Sunwest	Enclosure	#SW-1979
Malton	Enclosure	#MEF545471-PNM90351