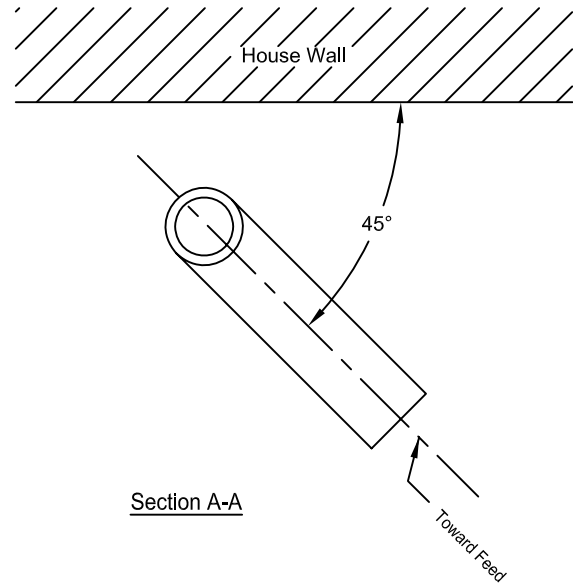


Service Distance (ft)	*125A Class Meter Socket	200A Class Meter Socket	320A Class Meter Socket
100' or Less	2"	2.5"	3"
Greater than 100'	2"	3"	3"

Contact your new service representative with the meter location and estimated load for more information.

*For manufactured and mobile homes ONLY

Main breaker larger than 320 Amps See MS-3-7.0



NOTES

- (1) Meter socket, rigid galvanized, Schedule 80 PVC or IMC conduit and elbow plus plastic bushing to be supplied and installed by customer. The elbow must be 90° and the intake of conduit must be parallel to the final finished grade. However, the combination of elbows are permitted as long as the summation of the total does not exceed 135° and the intake of the conduit must remain parallel to the final finished grade.
- (2) Customer to install 600V insulated conductor from meter socket to safety switch or distribution panel.
- (3) Customer shall install grounding system in accordance with NEC.
- (4) Preformed riser assemblies may be used if internal conduit diameter is maintained. "Muffler" bends are unacceptable. Use one piece of conduit from elbow to meter socket.
- (5) A locate meter on the side of a home, it must be within 10' of the street side of the house, but not behind stemwalls, sidewalls or other encumbrances.
- (6) Pipe strap shall be firmly attached to wall. Distance from meter box may be increased to a maximum of 5' where structural members do not need permit fastening within 3'.
- (7) Standard minimum 3' may vary to match detail depths.
- (8) 125A Meter socket is only applicable for manufactured and mobile homes.

REFERENCES

- (1) See DM-4-11.0 Maximum Available Fault Current
- (2) See DS-10-8.0 Trench Details
- (3) See MS-2-2.0 120/240V 125/200A Single-Phase Meter Socket
- (4) See MS-7-1.0 Underground or Overhead Working Space for Electric Meters

Underground Service Entrance System

DS-4-5.0