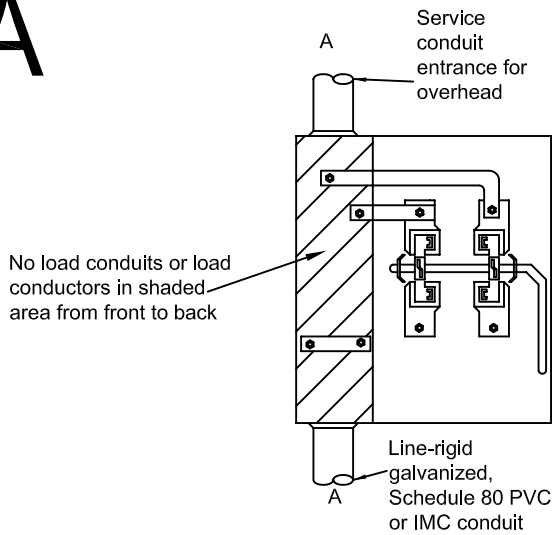


A

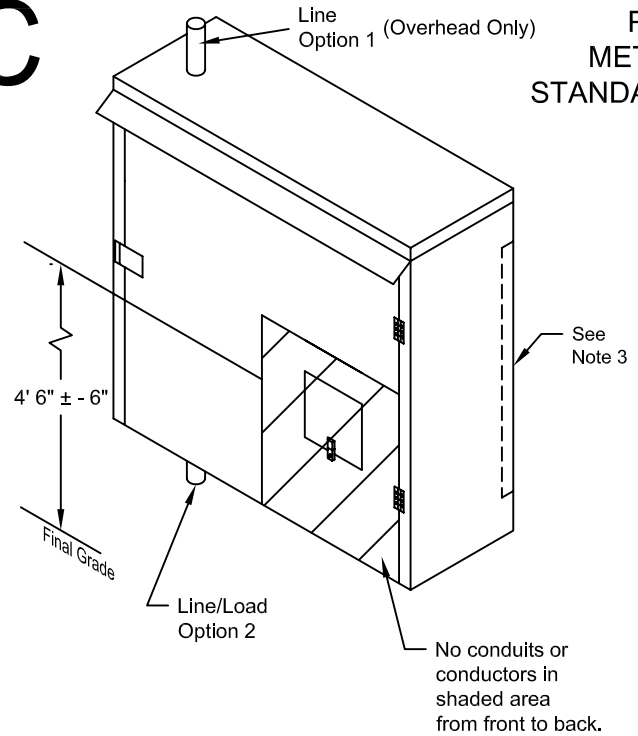


**FOR 320 AMP APPLICATION
THE TOTAL CAPACITY OF THE DISCONNECTS
CAN NOT EXCEED 320 AMPS.
400 AMP FUSE DISCONNECT NOT ALLOWED.
NO BUSS FUSING TOTALING 300A OR HIGHER**

NOTES

- (1) Check with PNM for sizing of conduit on underground services.
- (2) Enclosure shall be securely mounted to building.
- (3) Socket to be the same as, or similar to the above drawing.
- (4) May be used on single-phase overhead service in excess of 200A but not to exceed 320A residential or 320A commercial. The total capacity of the disconnects can not exceed 320A. 400A fuse disconnects not allowed.
- (5) Service conduit to enter at points "A".
- (6) Studs shall be provided for all termination in meter socket and compression type lugs shall be used.
- (7) PNM will make line termination on underground services only.
- (8) Equipped with lever arm bypass with jaw tension release.

C

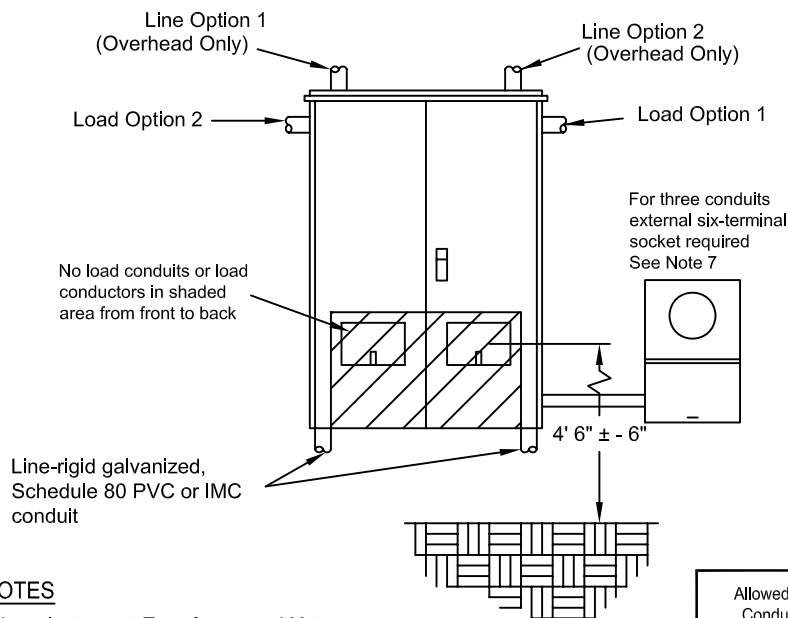


**PNM
METER
STANDARD**

NOTES

- (1) Meter and instrument transformer enclosure, per PNM drawing MS-3-6.0.
- (2) This enclosure must be used if loads exceed that of drawing "A"
- (3) Contractor must furnish full 3/4" plywood back.
- (4) Use one of three options. Option 3 exits rear of enclosure.
- (5) Enclosure shall be securely mounted to building.
- (6) Conductor size is limited to a single run no larger than 350 kcmil.

B



NOTES

- (1) MS-3-2.0 Double-Window Three-Phase Instrument Transformer and Meter Enclosure
- (2) Enclosure must be used when parallel conductors of 350 kcmil or larger per phase are installed. (600A main disconnect or larger)
- (3) Must have 3/4" plywood backing inside enclosure installed by contractor.
- (4) Use only one of four load options.
- (5) Enclosure shall be securely mounted to building.
- (6) Line and load options shall be on different quarter section.
- (7) If the number of runs or conduit size exceed that allowed by Table A, use MS-2-6.5.

Table A

Allowed # of Conduits	Maximum Conductors Size
2	750 kcmil
3	500 kcmil
4	Not Allowed
Maximum Four Conductors Per Conduit	

Over 200A 240V Single-Phase Meter Options

MS-3-7.0