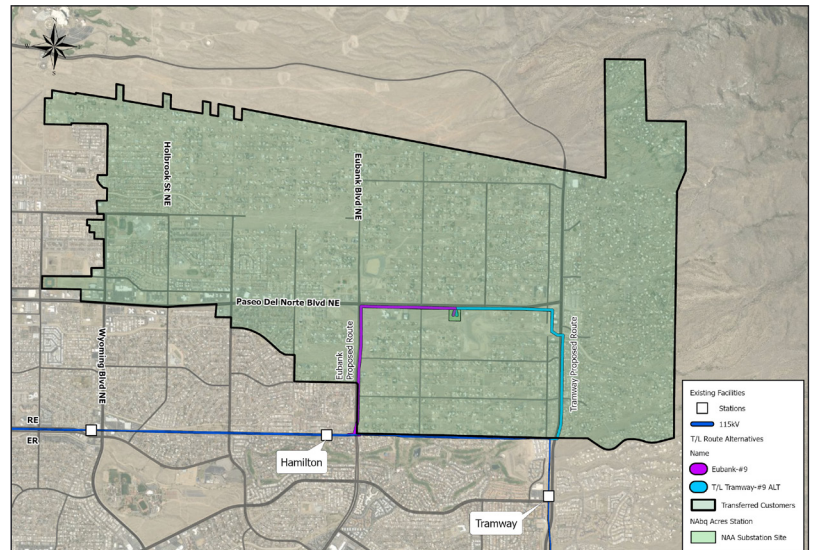




North Albuquerque Acres Substation Project

PNM's North Albuquerque Acres (NAA) Substation Project is a proposed critical infrastructure facility that will help keep the power on for homes and businesses in the far Northeast Albuquerque metro area. Substations that serve NAA, Sandia Heights and other far Northeast neighborhoods are at increased risk of overload. The project will include a substation located on or near Paseo del Norte between Ventura Street and Tramway Boulevard, near the load growth areas it will serve.

This map shows PNM's preferred substation location and two possible transmission line routes, one along Eubank Blvd. and one along Tramway Blvd., which will provide bulk power to the new substation for distribution to customers. The proposed site and routes will be reviewed by Bernalillo County. The Planning Commission is scheduled to consider the proposal in December 2025, followed by the Board of County Commissioners in Winter/Spring 2026.



Community Benefits



Equitable, Effective Power Delivery

Neighborhoods across the metro area benefit from electric infrastructure in their areas but may have their service at risk due to their substations serving demand from outside their neighborhoods. This project will help ensure a stable and reliable system for all customers and build a stronger energy grid for the entire County. The new substation will significantly improve electric service quality in the area by being strategically located near the homes and businesses it serves.



Infrastructure to Meet the Far Northeast Heights' Current and Growing Energy Demand

The area's energy needs exceed the normal rating of existing substations by up to 34 percent, straining the electric grid and increasing the risk of outages in the larger area. Average energy demand at nearby substations is also growing and is expected to continue increasing even further. Building a new substation near the load growth area it will serve is the only way to address this issue and avoid potential power outages in far Northeast Heights neighborhoods now and in the future.



Reduced Outage Risk Across the Far Northeast Albuquerque/Bernalillo County Metro Area

Many customers receive electricity from existing substations outside of their neighborhoods that do not have the capacity to serve ongoing growth in the far Northeast Heights. A system overload due to high energy demand has the potential to cause a power outage that could affect residents and businesses in dozens of neighborhoods in the Northeast Albuquerque metro area. A new substation in the far Northeast Heights area will reinforce the metro area's electric grid and help reduce the risk of outages and other service interruptions.



Next Steps

Following the submission of the Special Use Permit application this fall, the project is anticipated to be heard by the Bernalillo County Planning Commission in December 2025, with a final decision expected from the Board of County Commissioners in early 2026.