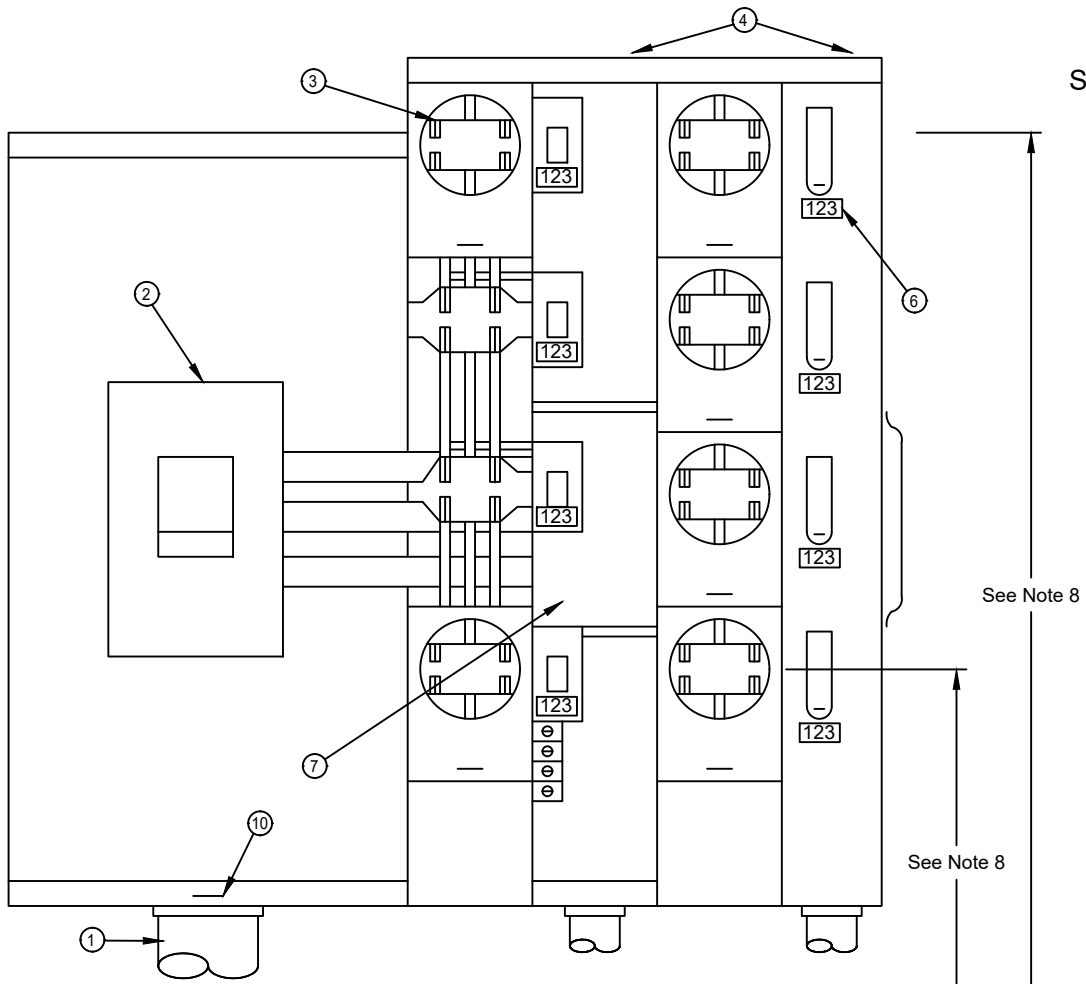


PNM
METER
STANDARD



See Note 8

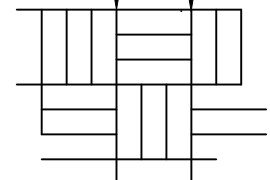
See Note 8

NOTES

- (1) Line duct must be rigid galvanized, Schedule 80 PVC or IMC. Coordinate size and number of line duct with PNM.
- (2) Main breaker may be required on the line side of any meter group sets to meet NEC, state or local codes.
- (3) New socket jaws installations must be minimum of 200A, for gang meter sockets only. For existing installations 125A is permitted.
- (4) Load conductors may exit either top or bottom of tenant breaker section. They shall not travel through or exit out of socket sections of modules.
- (5) All enclosures shall be securely mounted to building.
- (6) 1" placards to be used under main disconnect and adjacent to the corresponding socket on a non-removable part of the cabinet. No painted or written identification will be accepted.
- (7) Line bus feed must have metal barrier when passing through tenant breaker section for safety and security.
- (8) Top meter shall be a maximum of 79" from finished grade. Bottom meter shall be a minimum of 30" from finish grade. Maximum of five meters per column.
- (9) PNM requires a minimum clearance of 36" minimum between front of sockets and any wall or obstruction.
- (10) All line feed sections shall be lockable and sealable by PNM.
- (11) All units shall be complete with sockets and breakers at the time of initial set of first meter.
- (12) The single-phase house meter must be a four-jaw meter socket with a bypass handle. House meter must be tapped off from the phases and neutral of the line side meter pack main buss or disconnect breaker only when applicable.

REFERENCES

- (1) See DM-4-11.0 Maximum Available Fault Currents
- (2) See DS-7-16.10 Guard Post
- (3) See MS-2-1.0 Meter Socket Ring
- (4) See MS-2-2.0 120/240V 125/200A Permanent Single-Phase Meter Socket
- (5) See MS-2-5.0 120/240V 200A Single-Phase Meter Socket with Bypass Handle



Approved Equipment		
Manufacturer	Item	Mfg Part #
AMP	200A OH/UG Ringless # Position	RMR*-M400L
AMP	200A OH/UG Ringless # Position	RM*-400L
Eaton	200A OH/UG Ringless # Position	1MM***
Eaton	200A OH/UG Ringless # Position	1MP***
Eaton	200A OH/UG Ringless # Position	3MM***
Eaton	200A OH/UG Ringless # Position	35MM***
Eaton	200A OH/UG Ringless # Position	37MM***
GE	125A UG Ringless 4 Position	TMPR8412
Siemens	200A OH/UG Ringless # Position	WMM****
Siemens	200A OH/UG Ringless # Position	WML*****
Siemens	200A OH/UG Ringless	WP2211RJ
Siemens	400A OH/UG Ringless 6 Position	WP4611RJB
Square D	200A OH/UG Ringless # Position	MPR****
Square D	200A OH/UG Ringless Bypass # Pos	MPL****
Square D	200A OH/UG Ringless Bypass # Pos	EZML*****
Square D	200A OH/UG Ringless Bypass	MPH****
Square D	200A OH/UG Ringless Bypass, Residential ONLY	EZMH*****

*** There are various catalog # available for # positions.
Remove the first "W" if units are indoor.
For ease of checking service without interruption, PNM will no longer allow ring meter sockets as of 12/01/2013.

120/240V Single-Phase Four-Terminal Modular Meter and Equipment

MS-4-1.0