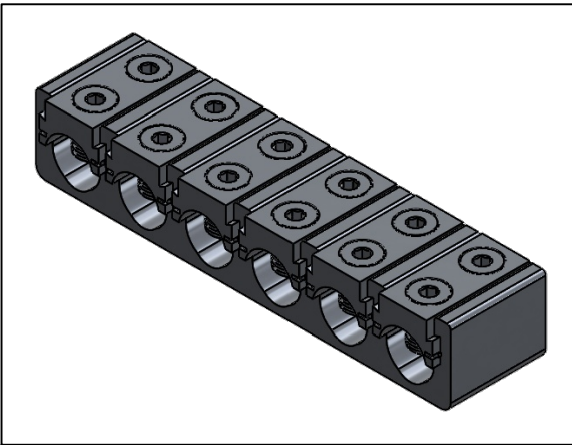
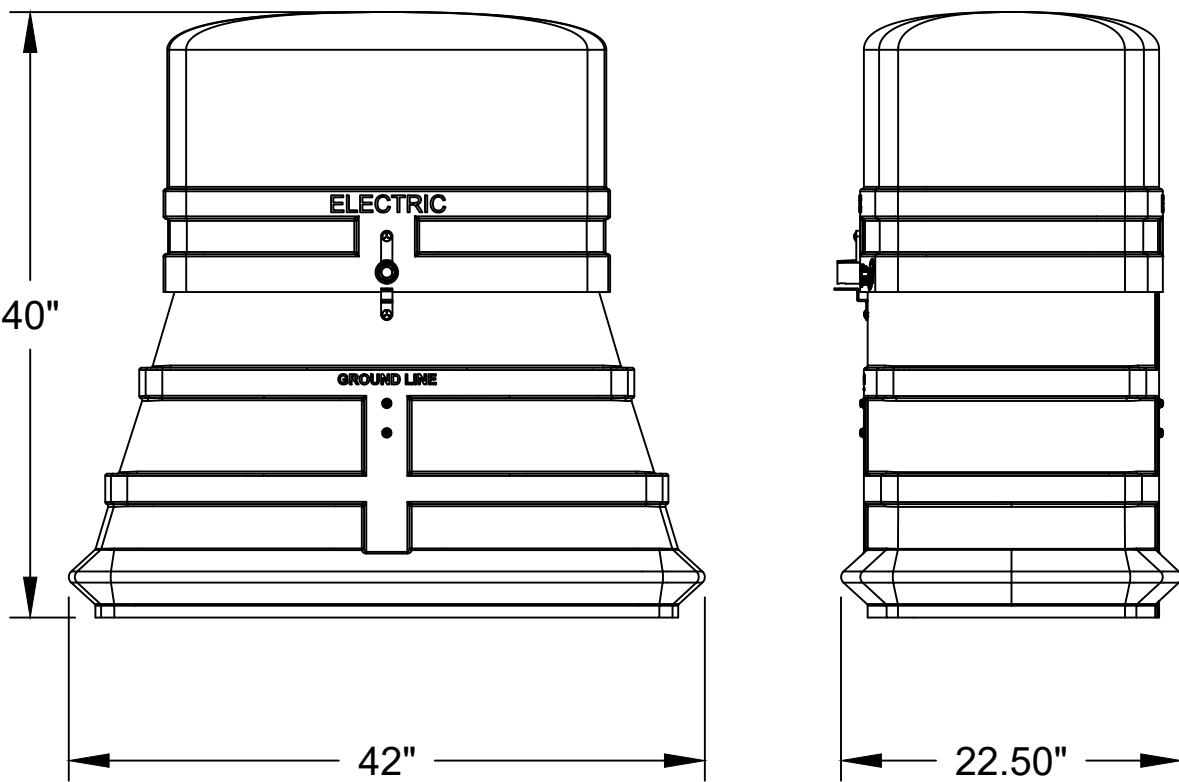
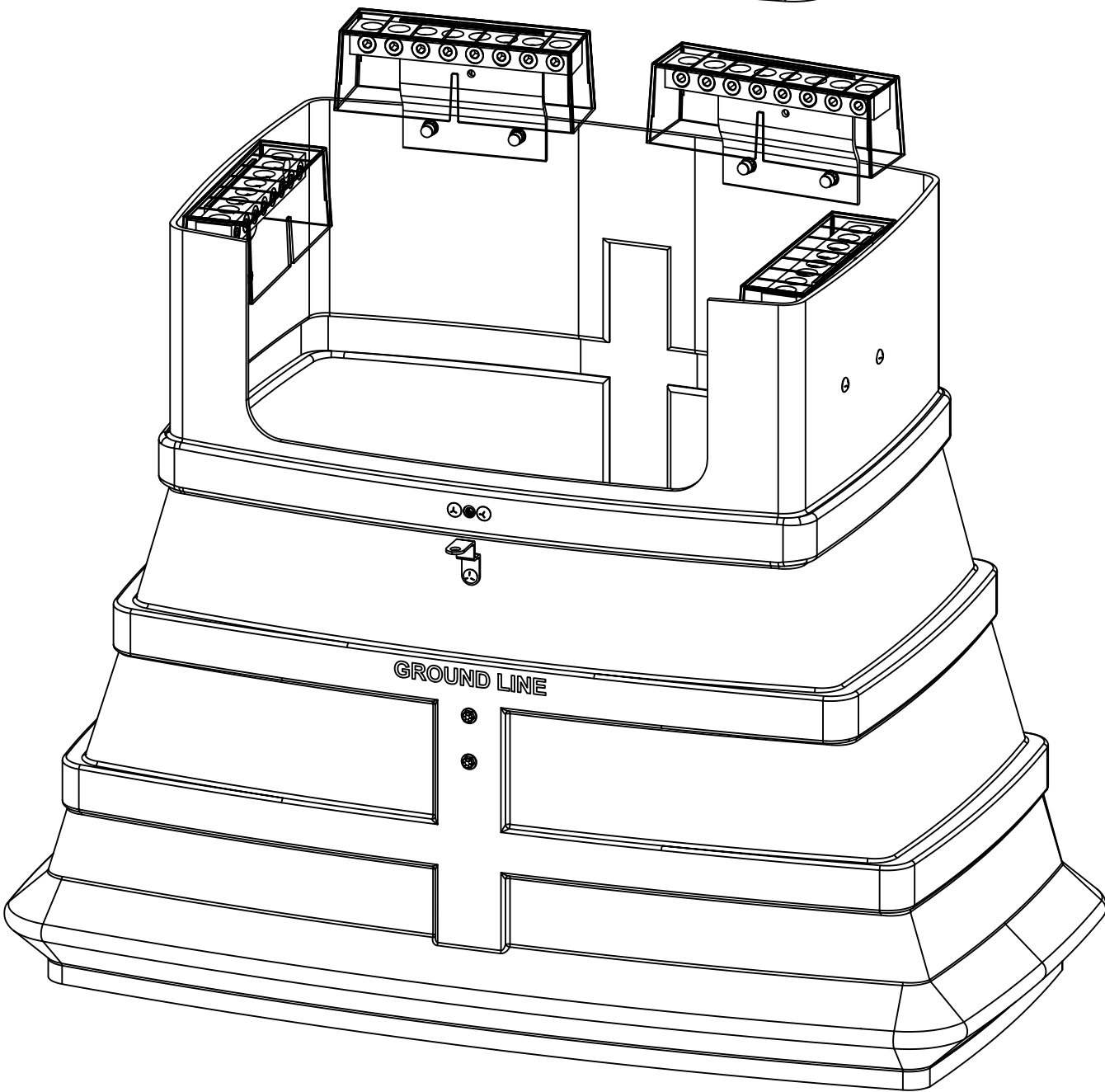
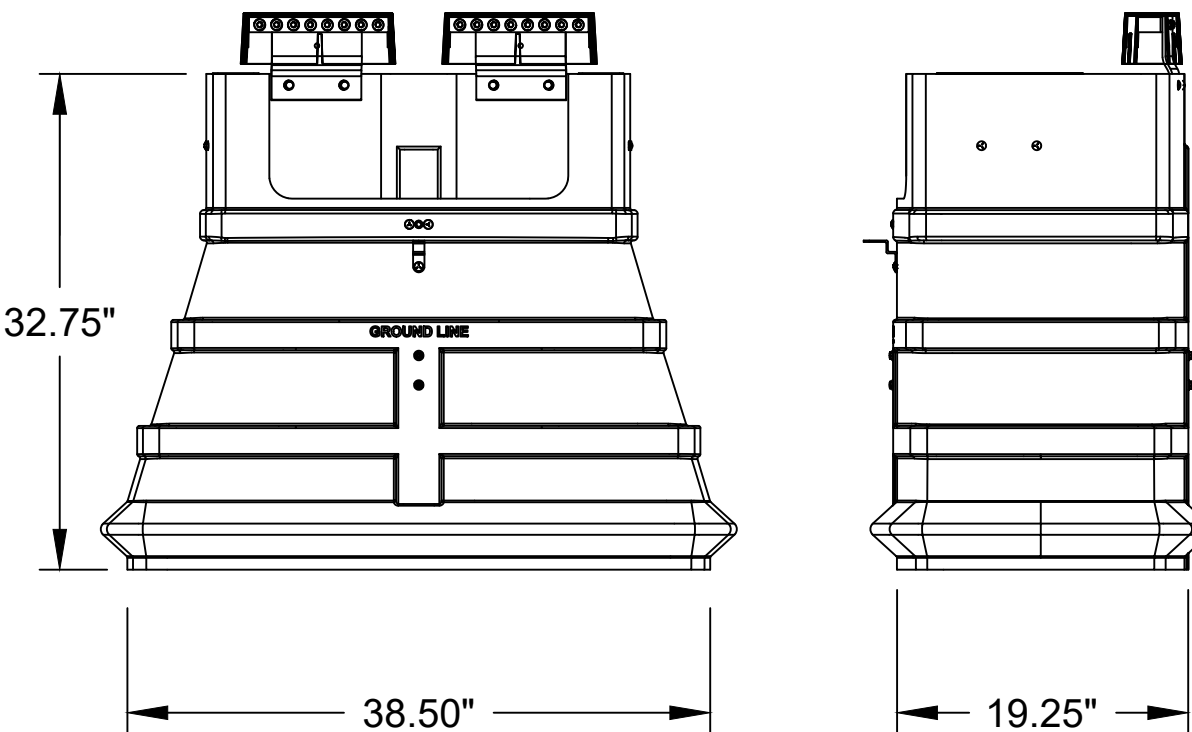
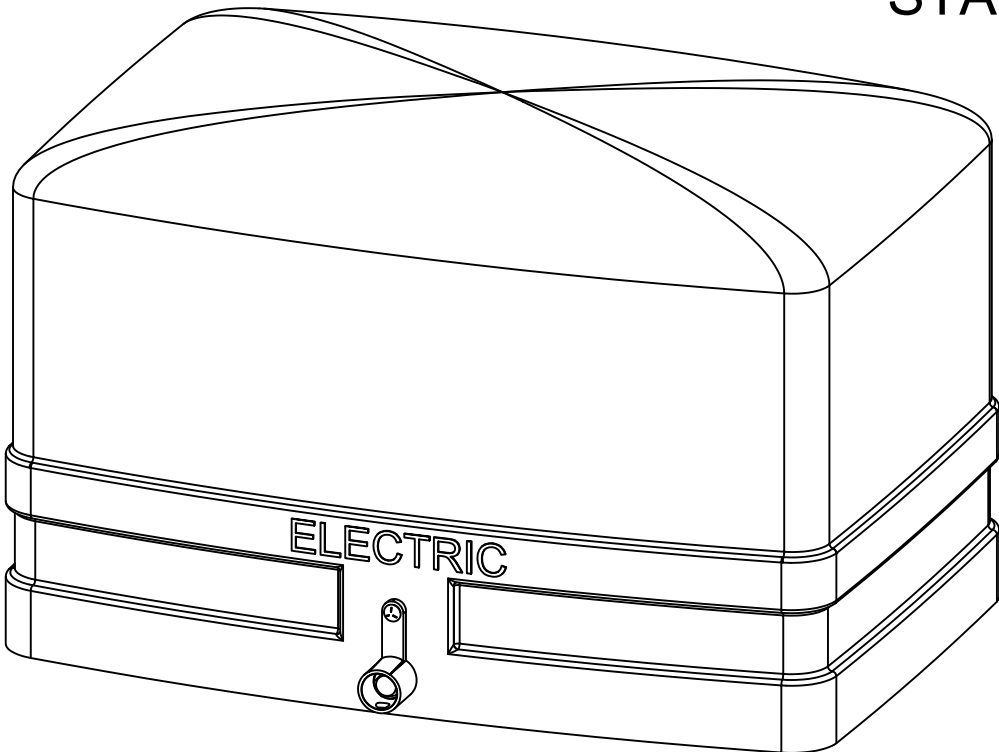
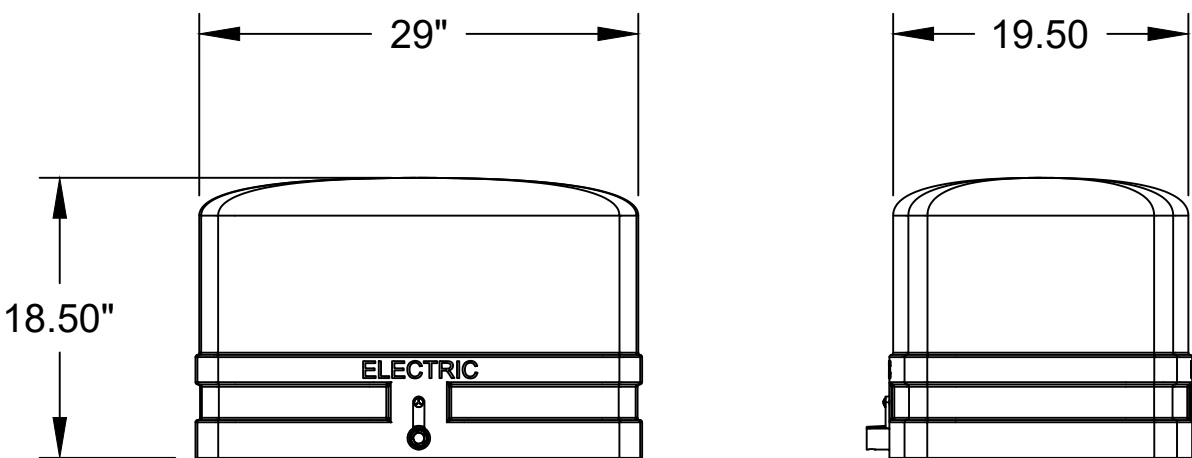


DISTRIBUTION  
STANDARD  
PNM



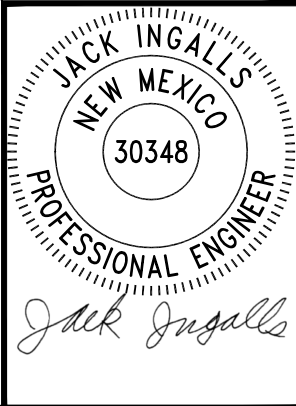
6 Port 1000 AL/CU  
Connector  
See Note 4

NOTES

- (1) Plug all empty ducts
- (2) Mark all circuit to show location of the other terminal.
- (3) Working clearance is 4' in front of the doors and 1' from the sides.
- (4) Connector preinstalled with pedestal by manufacturer.

REFERENCES

- (1) See DS-4-8.1 Overhead to UG Service Via Secondary Pedestal
- (2) See DS-18-26.0 Overhead and Underground Torque Values
- (3) See Material Catalog - Chapter 4 "Pedestal"



Material List			
Item	Quan.	Description	Ref./CU/Item Number
A	1	Three-Phase Pedestal	GUSP3/ 0100009320
B		Three-Phase Pedestal Connector	See Ref. 3
C	1	Padlock	GBUTPL1/ 5340187774
D	1	4' Don't Fence Me In Decal	-/ 0100004436

Three-Phase Pedestal

DS-10-11.0