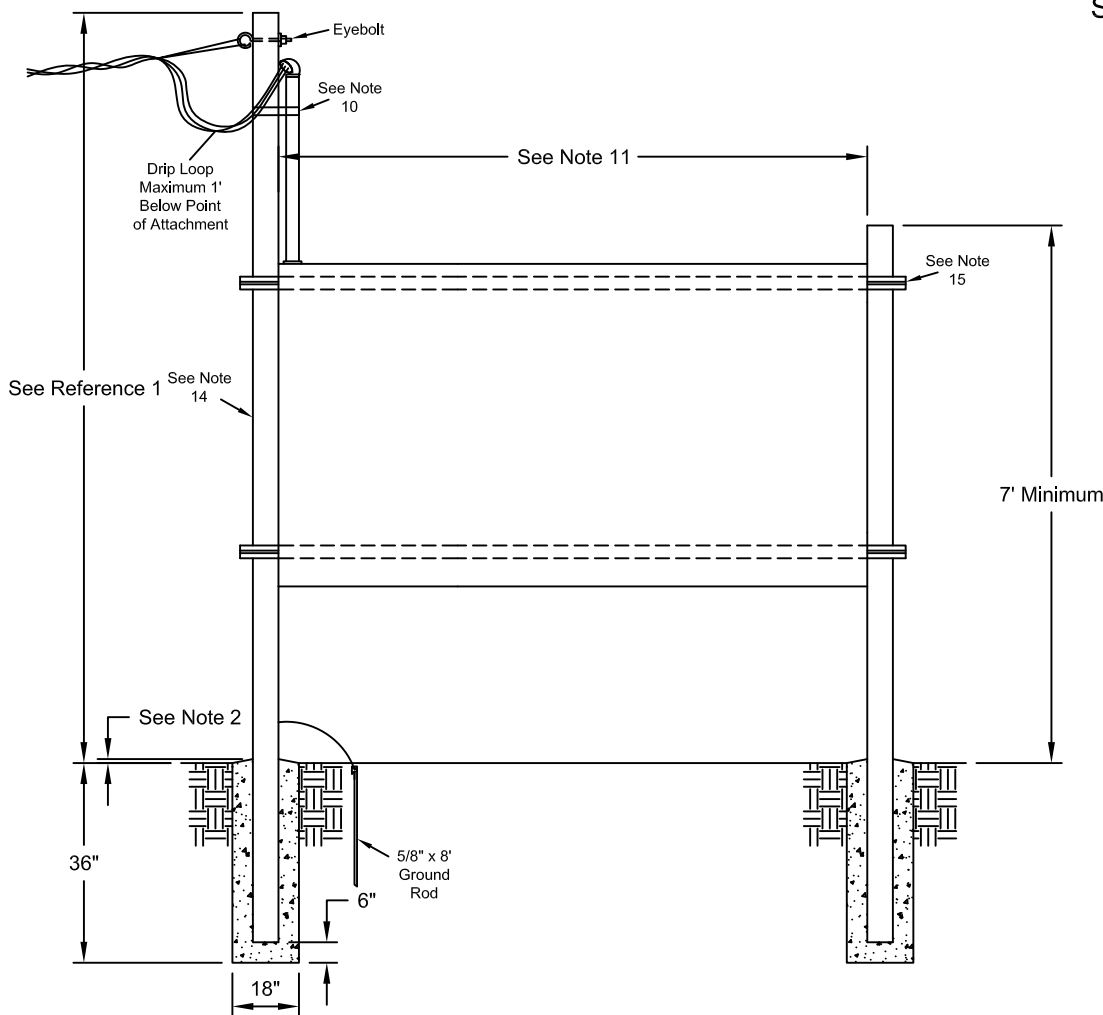


PNM
METER
STANDARD

NOTES

- (1) Line duct must be rigid galvanized, IMC or EMT.
- (2) Concreted to be 1" above grade and tapered from post to ground.
- (3) Main disconnect may be required on the line side of any group of more than six meter sets to meet NEC, state, or local codes.
- (4) Top meter shall be a maximum of 4' - 5' 6" from finished grade bottom meter shall be minimum of 30" from finished grade.
- (5) PNM requires a minimum of 48" between front of above enclosures and any wall or obstruction.
- (6) All line feed sections shall be lockable and sealable by PNM.
- (7) All units shall be complete with sockets and breakers at the time of initial set of first meter.
- (8) Guard posts will be required in traffic areas.
- (9) Contact PNM customer service representative for height of service attachment point if service crosses driveways. Areas subject to vehicle traffic are specified herein for 12' attachment height. Higher attachment may require different supports.
- (10) Pipe strap shall be firmly attached to support member at intervals of 30" minimum.
- (11) If separation between support members is greater than 6' an additional center support of the same material will be required.
- (12) Metering installations shall be located along the front lot line. Contact PNM Electric Service delivery to coordinated a meter spot.
- (13) 480V can be used for Mobile Home Park and apartments.
- (14) Approved materials for support members:
2 1/2" Pipe (min), 3" x 3" - 1/2" Angle Iron, 2" x 2" - 3/16" Box Steel. Capped or filled with concrete.
- (15) Approved material for backing:
P1000 Unistrut Welded, 1/2" Plate Steel Welded and Painted.
- (16) PNM requires this gang metering Field Built Structure per MS-5-4.0 for new/upgrades to Mobile Home Parks. Please consult with you PNM representative before installing metering equipment in Mobile home Parks.

Approved Equipment		
Manufacturer	Item	Mfg Part #
Eaton	200A OH/UG Ringless # Position	1MP****
Siemens	225A OH/UG Ringless # Position	WP4 *12RJ
Siemens	225A OH/UG Ringless # Position, 600A Buss	WP6 *12RJ
Siemens	225A OH/UG Ringless # Position, 800A Buss	WP8 *12RJ
Siemens	225A OH/UG Ringless # Position, 1000A Buss	WP10 *12RJ
Square D	200A OH/UG Ringless # Position	MPR4*200
Square D	225A OH/UG Ringless # Position	EZMR11*225
Square D	225A OH/UG Ringless # Position	EZMR31*225

REFERENCES

- (1) See DS-4-4.5 Minimum Point of Attachment Height for Service Drop Cables
- (2) See DM-4-11.0 Maximum Available Fault Currents

* There are various catalog #'s available for # of positions

For ease of checking service without interruption, PNM will no longer allow ring meter sockets as of 12/01/2013.

Three-Phase or Single-Phase, Overhead or Underground
Field Build Structure

MS-5-4.0