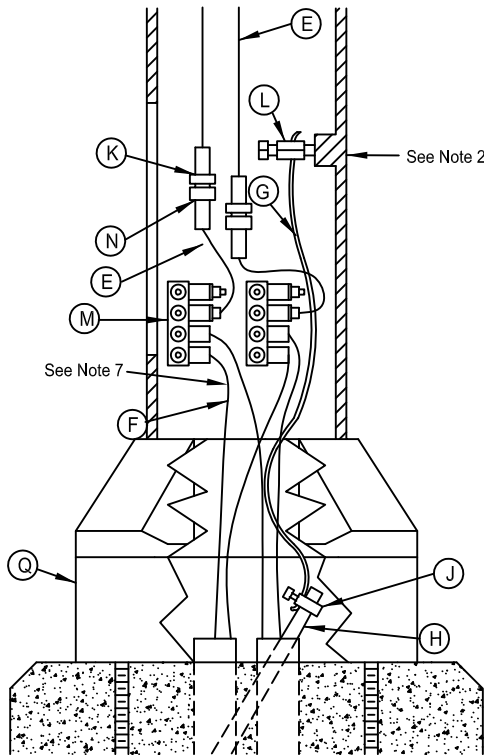
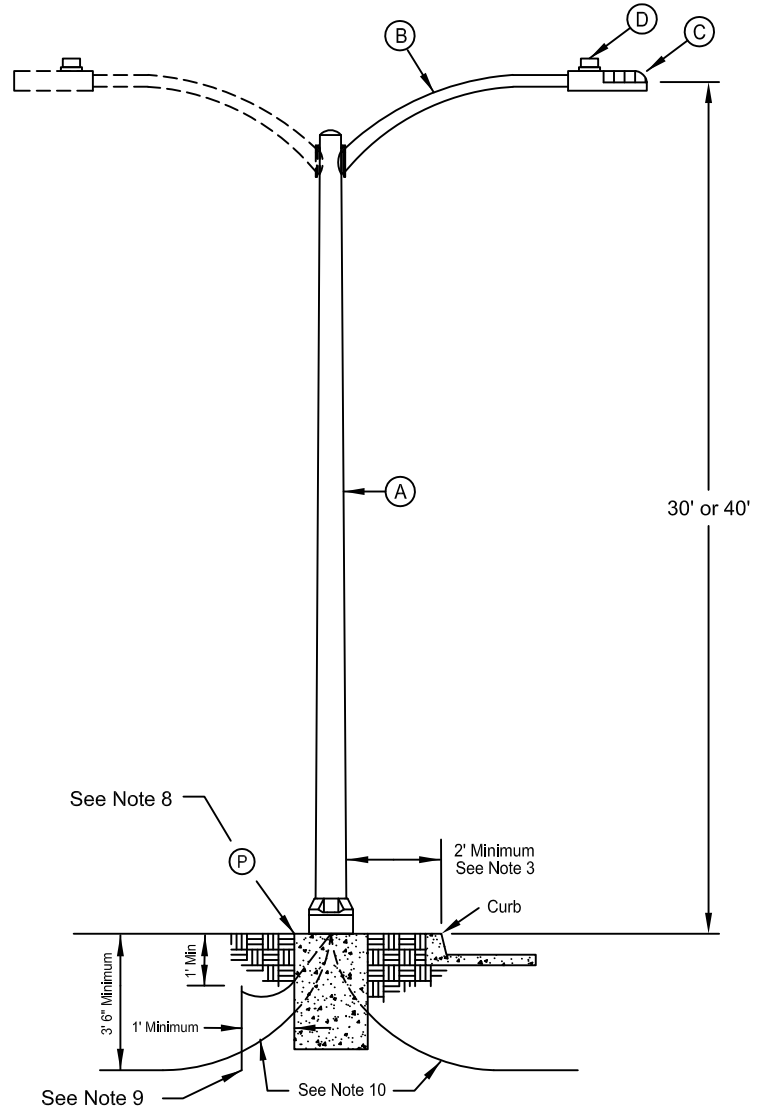


DISTRIBUTION
STANDARD
PNM



Grounding Detail



	30'	40'
Pole	5680-000048	5680-000279
Luminaire		
240V	0100-004656	0100-004655
480V	TBD	TBD

NOTES

- (1) Level luminaire in accordance with manufacturer's instruction.
- (2) When system neutral is available ground to pole.
- (3) May be reduced if necessary, but not less than 6".
- (4) Pole must be at least 4' from fire hydrant.
- (5) Poured-in-place foundation must be cured for 14 days before erecting pole.
- (6) NESC Rule 231, 314B
- (7) Leave 18" to 24" tail from edge of conduit stubout.
- (8) Poured-in-place DS-12-14.0 or precast foundation 5975-269233.
Caution: If precast foundation is used, earth must be compacted in 6" lifts.
- (9) Driven ground rod is required if precast foundation is used and pole is not grounded to system neutral.
- (10) Typical combinations:
2-#2AL with 1-#6 SD CU Ground Wire
#2 CU Triplex with 1-#6 CU Ground Wire
#2 AL Triplex with 1-#4 AL Ground Wire
- (11) Medium LED (30' pole) replaces 135W LPS, 200W HPS, 250W HPS and 400W MV.
- (12) Large LED (40') replaces 400W HPS.

REFERENCES

- (1) See DS-12-1.0 Lamp and Photo-Control Identification Coding
- (2) See DS-12-14.0 Foundation Detail-Arterial Street Light
- (3) See DS-12-17.0 Precast Street Light Foundation
- (4) See DS-18-20.0 Ground Assembly

Material List			
Item	Quan	Description	Stock #
A	1	28' 6" or 38' 6" Aluminum Pole	5680-
B		6' Aluminum Arm	5975-268813
C		LED Luminaire	
D		Shorting Cap	7000-192500
E		600V 2/C #10 UF CU Cable	6145-000326
F		or 600V #2 AL Cable	5935-232784
G		#6 CU Wire	6145-002496
H	1	5/8" x 8' Ground Rod	5975-258368
J	1	5/8" Ground Rod Clamp	5935-232784
K	2	Fuseholder	5920-227641
L	1	Streetlight Pole Grounding Lug	5935-236942
M	2	Four-Way Streetlight Connectors	5935-238484
N	2	10 Amp Limitron Fuse	5920-226155
P	1	Precast Street Light Foundation or Pour-in-Place Foundation	DS-12-14.0
Q	1	9" Breakaway Base	5680-000600