

Make a plan in the event that there are PUBLIC SAFETY POWER SHUTOFFS (PSPS)



At PNM, we know how devastating wildfires can be and we take seriously our role in working to minimize the risks associated with power lines. Your safety is our priority.

Our Wildfire Mitigation Plan is designed to prevent the accidental ignition of wildfires, while minimizing unnecessary disruption to your lives.

A Public Safety Power Shutoff (PSPS) Plan can save lives and property when extreme weather conditions exist.

What is a Public Safety Power Shutoff (PSPS)?

- During a PSPS, PNM proactively shut-off power in identified areas of extreme wildfire risk. This reduces the potential of electrical lines becoming a wildfire ignition source or contributing to the spread of wildfires when wind blows trees or debris into power lines.
- Must be coordinated with local community authorities.
- A PSPS is the last resort in our larger wildfire mitigation plan.

Why would a PSPS be initiated?

- For the safety of our customers, employees and environment.
- In the most dire of situations when the weather conditions are so extreme that there is a grave likelihood of a live power line starting or contributing to the spread of a wildfire.

How would a PSPS be initiated?

- PNM Engineers are closely monitoring a combination of critical conditions, (wind patterns, vegetation in the areas, etc). If the risk is deemed extreme PNM will alert community leaders and first responders and begin initiation of a PSPS. Sometimes we will have time to do notifications before shutting off the power but based on conditions we may have to shut-off power without warning.

Community meetings:

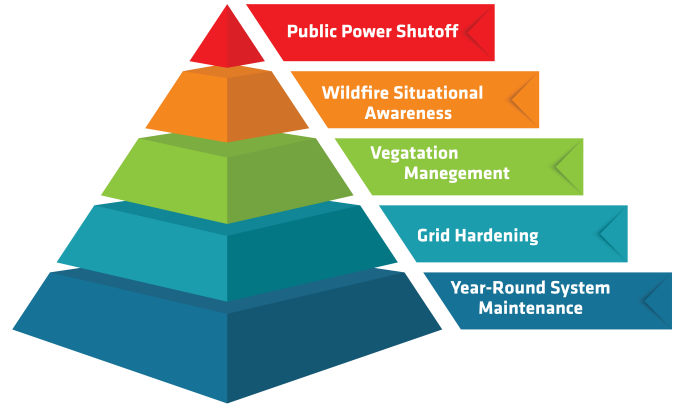
- As we build this plan, we want to work with you to determine the most appropriate way to roll it out in your community in an effort to maximize safety and minimize disruption.

Your input matters:

- Our planning will take into account your feedback on how community members will be made aware of this plan, important steps for homeowners to take to prepare for a PSPS, and what community resources are available to those in need of a place providing power during a PSPS.

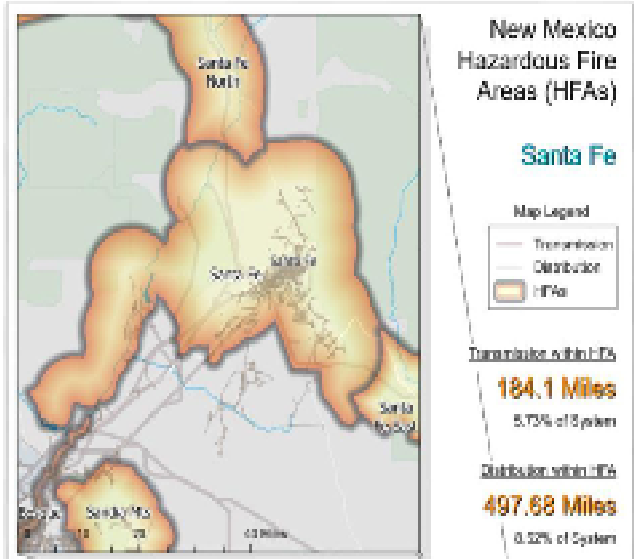
Where might a PSPS be initiated?

- PNM will initiate a PSPS in a designated Hazardous Fire Area (HFA) as way to save lives and protect property.
- PNM's Wildfire Mitigation Plan identifies HFAs where heightened wildfire risk and consequences exist within its service territory. HFAs can be areas where vegetation, terrain, meteorology, population density and the wildland-urban interface increase the risks associated with wildfire ignition in these designated areas. An HFA map has been provided for your area.



Why can't we just clear cut trees?

- The environmental ramifications of clear cutting are significant. Removing large portions of trees can have a dramatic effect on the ecosystem, including erosion and sedimentation in waterways, disrupting habitats and declining biodiversity, and rapid growth of flammable brush and smaller trees on the forest floors that can fuel future fires.



Why can't we simply underground power lines?



WARNING

- The feasibility of undergrounding power lines varies greatly depending on the geographical and environmental context. In areas with rocky terrain, high water tables, or frequent seismic activity, the process can be particularly complex and sometimes impracticable. Urban settings may also present challenges due to existing underground utilities and infrastructure, resulting in potentially disruptive excavation work.
- While underground power lines are less susceptible to weather-related outages, they are not immune to equipment failures. In the event of such failures, the repair times can be considerably longer compared to overhead

