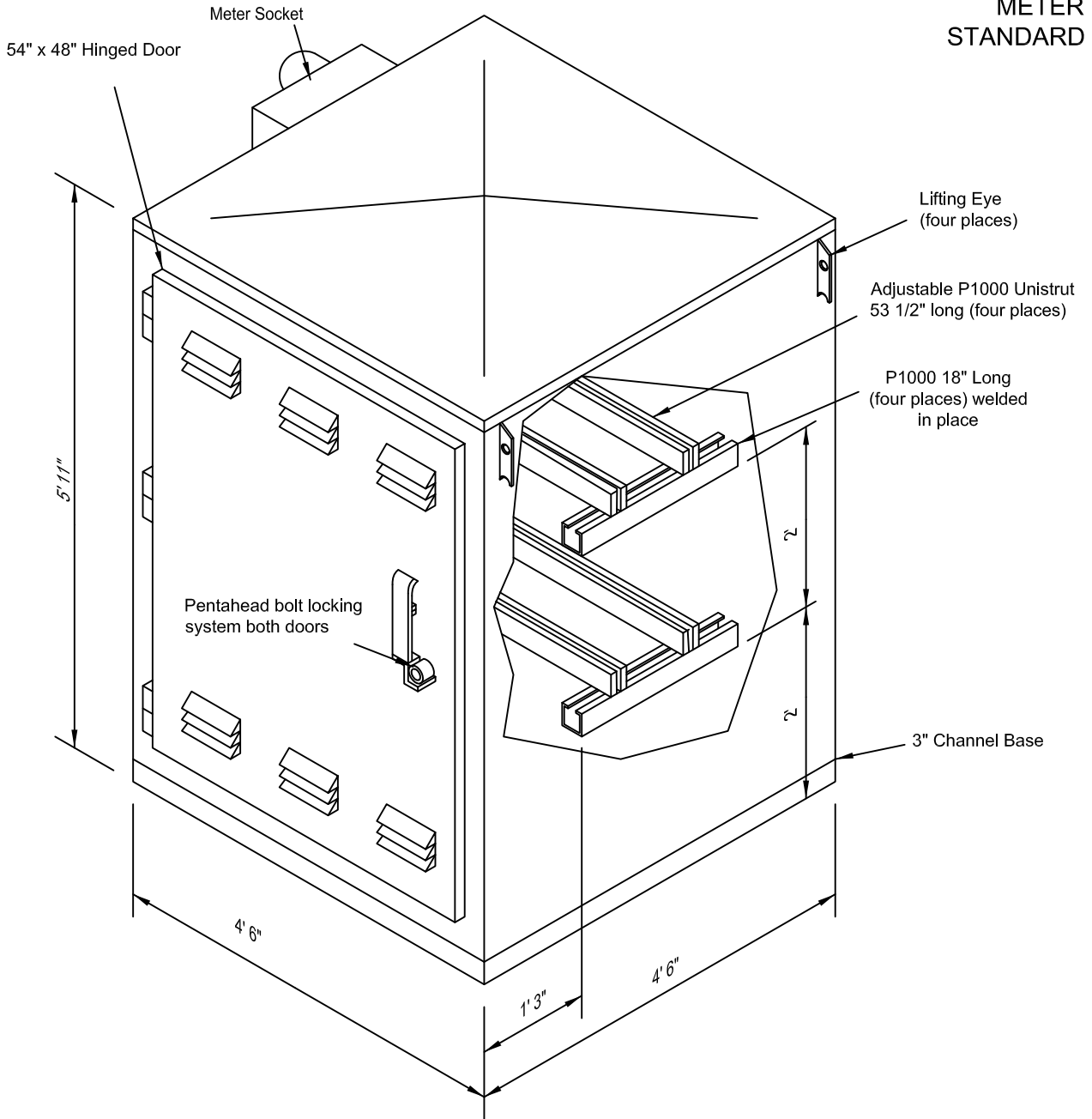


**PNM
METER
STANDARD**



NOTES

- (1) Meter enclosure, may be mounted on either side of CT and PT enclosure.
- (2) Customer will furnish both meter socket and CT enclosure and deliver to PNM.
- (3) PNM will mount meter enclosure, transformer, meter and meter wiring.
- (4) Enclosure must comply with PNM specification M-1.

REFERENCES

- (1) See DS-7-17.2 7200/12470V CT and PT Meter Enclosure Precast Pad
- (2) See MS-2-7.0 Three-Phase Thirteen-Terminal Socket for CT Meter
- (3) See MS-3-18.0 7200/12470V Primary Meter Enclosure
- (4) See MS-3-20.0 7200/12470V CT and PT Meter Enclosure Mounts
- (5) See MS-3-21.0 7200/12470V CT and PT Meter Enclosure Pad

Important:

Socket shall be wired phase 1-2-3 from left to right and the conductors marked as such. Each conductor phase will be identified at the weather head or padmount, and at the meter base using band-wraps of electrical tape:

- One band for phase one
- Two bands for phase two
- Tree bands for phase three
- White tape is suitable for neutral conductors only

Approved Equipment		
Manufacturer	Item	Mfg Part #
Shallbetter	Enclosure	SPML-3480-715454-GA-PNM
Sunwest	Enclosure	SW-1979

7200/12470V CT and PT Meter Enclosure

MS-3-17.0