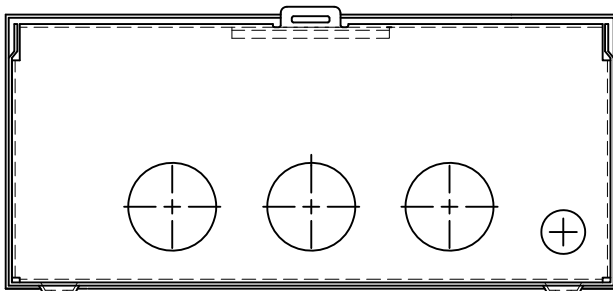
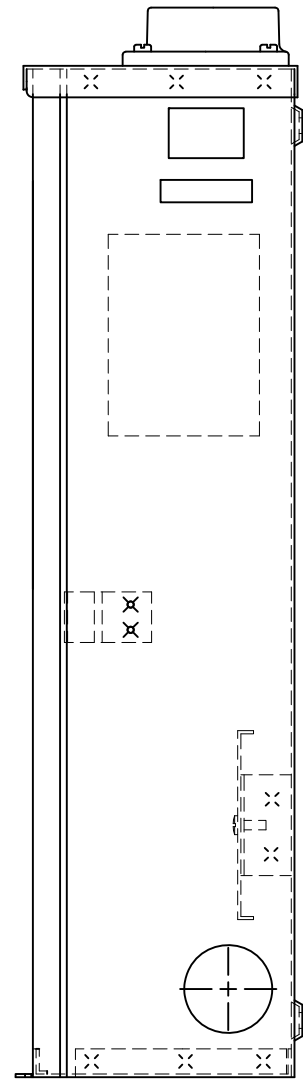
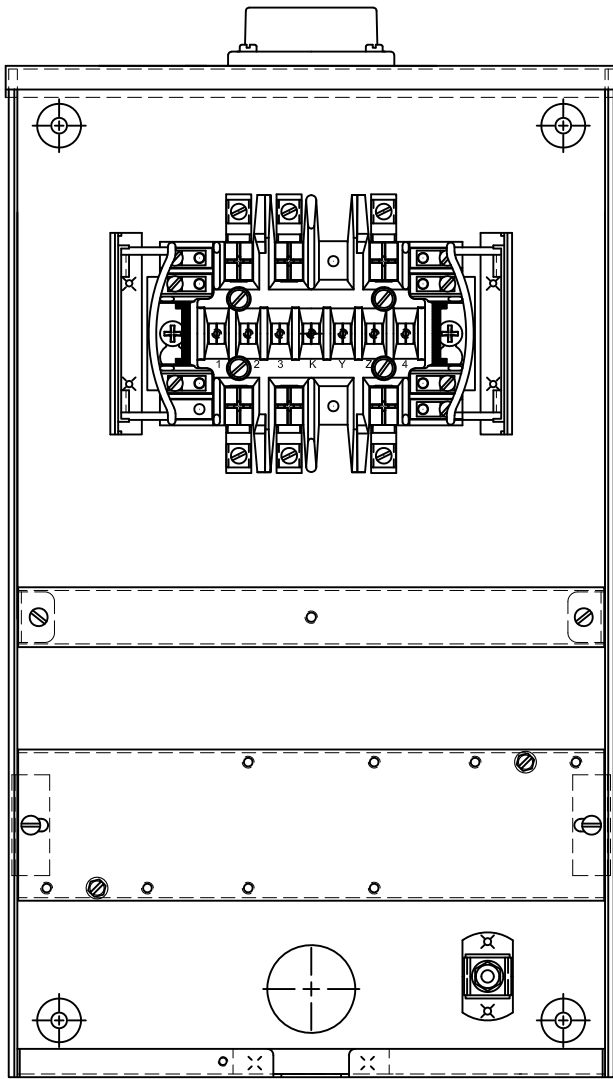


PNM  
METER  
STANDARD



**NOTES**

- (1) Socket to be Underwriters Laboratory (UL) listed.
- (2) Socket shall be 20A class only.
- (3) Meter shall be 4' - 5' 6" from finished grade.
- (4) Socket shall have two separate covers for meter and test switch compartments.
- (5) Latching bottom compartment shall lock both covers.
- (6) Metering and instrument cabinets shall not be used to house Customer-owned equipment, such as distribution panels or other equipment, nor used as a junction box/trough for the distribution of circuits.
- (7) Customer building numbers must be permanently painted on proper meter panels.
- (8) PNM does not permit a trough ahead of meter socket.

Approved Equipment		
Manufacturer	Item	Mfg Part #
Eaton	20A 13T Ringless Socket	USTS132CCH
Milbank	20A 13T Ringless Socket	UC3423-XL
Milbank	20A 13T Ringless Socket	UC3423-XL-13
Siemens	20A 13T Ringless Socket	9837-8500
Siemens	20A 13T Ringless Socket	9837-8501
Siemens	20A 13T Ringless Socket	9837-8502
Siemens	20A 13T Ringless Socket	9837-8503
Siemens	20A 13T Ringless Socket	9837-8543

For ease of checking service without interruption, PNM will no longer allow ring meter sockets as of 12/01/2013.

Three-Phase Thirteen-Terminal CT Meter Socket

MS-2-7.0